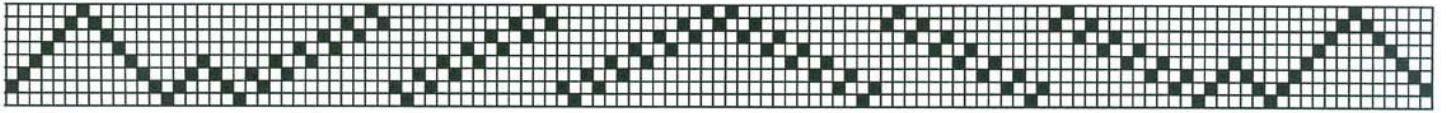




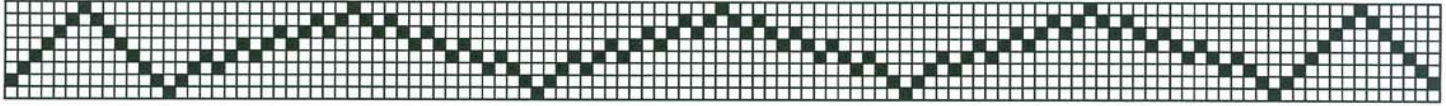


**Einzüge:**

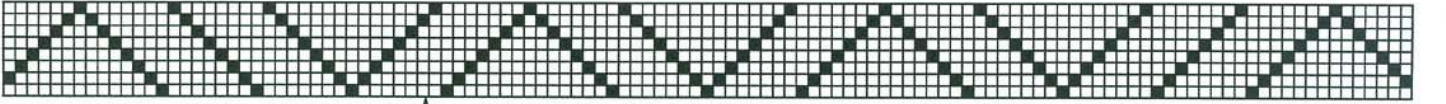
Muster B (119 Fäden)



Muster C (117 Fäden)

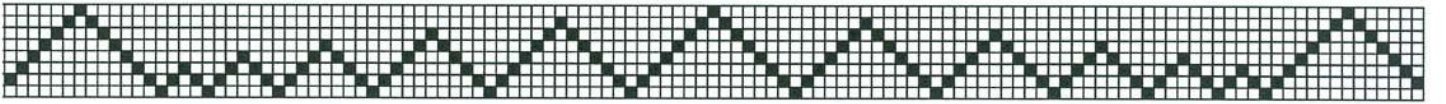


Muster D (119 Fäden)

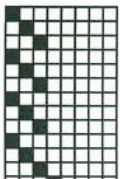


↑ Hier beginnen mit dem unvollständigen Rapport D am Rand (36 Fäden)

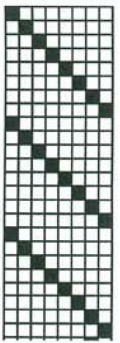
Muster E (121 Fäden)



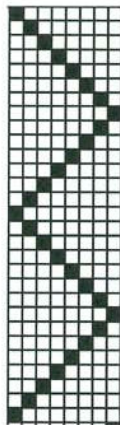
**Verschiedene Tretweisen:**



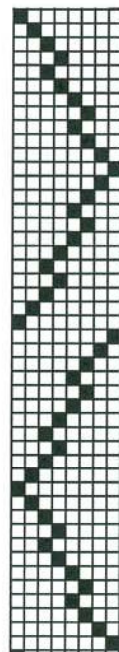
a) für die dunkelgrünen Streifen, total 15 Schüsse



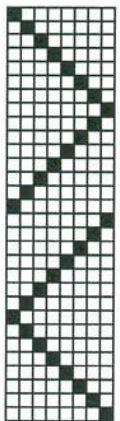
b) einfache Tretweise



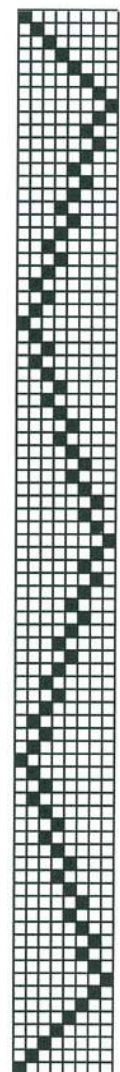
c) Tretweise für Hemd



e) Tretweise für Gilet



d) Tretweise für Gilet



f) Tretweise für Gilet